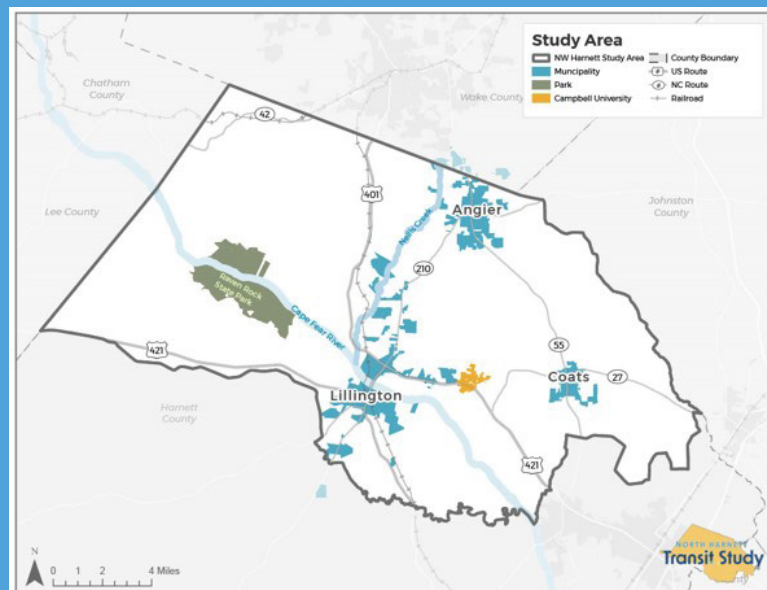


NORTH HARNETT Transit Study

As North Harnett County continues to experience increased growth and development, exploration of various mobility options, such as public transit, is underway. The North Harnett Transit Study will identify transit needs and provide transit service recommendations for the portion of Harnett County that includes Angier, Lillington, Coats, Buies Creek, Raven Rock State Park, and Campbell University.



The study area encompasses the northern half of Harnett County that overlaps with the Capital Area Metropolitan Planning Organization (CAMPO) boundary.

What Is Public Transit?

Public transit means transportation that everyone in a community can use together. It includes things like buses, shuttles, or shared rides. People use it to travel to work, school, the store, or to see friends.



Work



School



Social Visits



Shops



Appointments

What Are The Benefits?



Access to Employment



Community Accessibility



Congestion Mitigation



Environment and Air Quality



Cost-Effective Transportation



Emergency Evacuation and Response



Sustainable Development



Quality of Life

How Do Community Members Use Transit?



Transit helps Joe support his family in times of emergencies, like when he broke his leg and their family of 4 had one driver to get everyone to and from school, work, appointments, and social visits.

Single-parent Emily also benefits from transit. When her vehicle needs repairs and rideshares are unaffordable, transit helps Emily to pick up her son from school.



And for Alex, who sometimes works late and lives far away from the manufacturing facility, transit provides a safe and affordable way to get home after his regular carpool with coworkers has left for the day.

What Does Transit Look Like?



Demand Response

On-demand transit enables people to book and pay for rides via an app or a phone call. **RIDE** is an on-demand shuttle service in Wilson, NC, that replaced the fixed route bus system in 2020. RIDE is available Monday through Friday for \$2.50 a trip within the defined service area.



Microtransit

Microtransit is an on-demand service (similar to Lyft or Uber) that allows users to request same-day service from a pickup location to a specified location. **GoWake Access** is currently launching a pilot project studying the use of microtransit in the northeastern areas of Wake County, NC.



Circulator Service

Circulator bus transit is a short-distance, circular, fixed-route transit mode that takes riders around a specific area with major destinations. The **GoRaleigh R-Line Circulator** ran every 15 minutes and connected people to restaurants, retail, entertainment venues, museums, hotels, and parking facilities in downtown Raleigh.



Commuter Express Bus

A commuter bus service mainly runs in one direction during peak commute times. It has limited stops, and travels on long routes, typically connecting the downtown area to suburban neighborhoods. **GoTriangle 305 Bus Service** is an express bus service that connects Holly Springs to Raleigh, NC.



Hop on board the North Harnett Transit Study website and discover how transit shapes our lives and connects communities.

www.NorthHarnettTransitStudy.com